



SERIE BG2G

- **Controlled Power Supply**
- **Secondary cutting**
- **Power: 120 W to 480 W**
- **Entry : 115, 230 or 400 VAC**
- **Protection overloads and DC**
- **Provided fixing angles**
- **Guarantee : 2 years**

TECHNICAL FEATURE

Frequency of entry : 47 to 63 Hz

Indicator tension presence with the secondary of the transformer

Cumulated regulation, with variable V_e in the range indicated below, I_s of 0 to I_s max.

BG2G 245-...±1% BG2G 485-...±2% BG2G 2410- and BG2G 2420-...±3%

Residual undulation: 0.5% to 1%

Dielectric rigidity: entry/exit : 4000 Veff during 1 min.

entry/ mechanical ground : 3500 Veff during 1 min

exit/ground : 500 Veff during 1 min.

Insulation: 100 MΩ under 500 VDC

Operating temperature: 0 with +50°C

Temperature of storage: -25 with +85° C

Derating running max above 45°C for double models:-2%/° C

Storage temperature: -25 with +85° C Without Condensation

Conformity: IN NF 60742 (transformer)

Options

- Plate provided PL EURO (for BG2G 245-)

- Pair of fixing angles EQSTD, provided for the other models

STANDARD MODELS

Range of entry		Range of exit	Exit current	Models
103.5-126.5 VAC	207-253 VAC	24 VDC	5 A	BG2G 245-230
207-253 VAC	360-440VAC	24 VDC	5 A	BG2G 245-400
103.5-126.5 VAC	207-253 VAC	24 VDC	10 A	BG2G 2410-230
207-253 VAC	360-440VAC	24 VDC	10 A	BG2G 2410-400
207-253 VAC	360-440VAC	24 VDC	20 A	BG2G 2420-400
103.5-126.5 VAC	207-253 VAC	48 VDC	5 A	BG2G 485-230
207-253 VAC	360-440VAC	48 VDC	5 A	BG2G 485-400
207-253 VAC	360-440VAC	48 VDC	10 A	BG2G 4810-400

Protections :

- by temporised fuse (to envisage by the user)

	BG2G 245-	BG2G 2410- ET 485	BG2G 2420- ET 4810-
Entry 115 Veff	4 A	6.3 A	12 A
Entry 230 Veff	2 A	4 A	6.3 A
Entry 400 Veff	1 A	2 A	4 A

- against overloads and short-circuits at exit, by limiting device of intensity; threshold fixed between 105 and 160% of I_s max.
- against overpressures of short duration at exit: by clipping diode

Weight: BG2G 245- : 5.5kg / BG2G 2410- and 485- : 9.5kg / BG2G 2420- and 4810- : 14.5 kg

In a constant preoccupation with an improvement. of its products, it transfers the right to modify without very characteristic notices quoted in present document

P R O N E R G Y

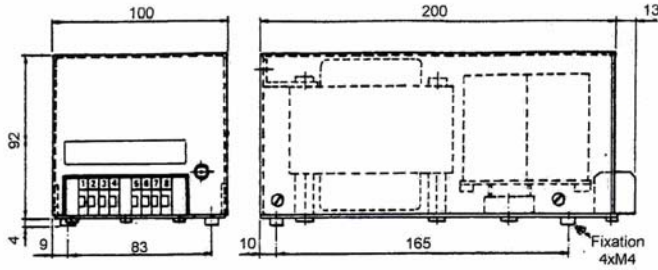
L'énergie à votre mesure

Tél. (+33).01.69.19.43.03– Fax. (+33).01.69.19.43.01
5 rue Ampère, 91380 CHILLY- MAZARIN, France

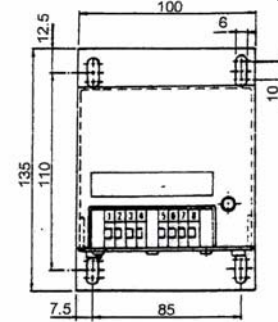
www.pronergy.com contact@pronergy.com

DIMENSIONS

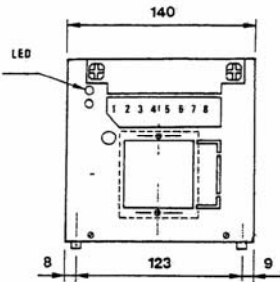
MODELS BG2G 245-



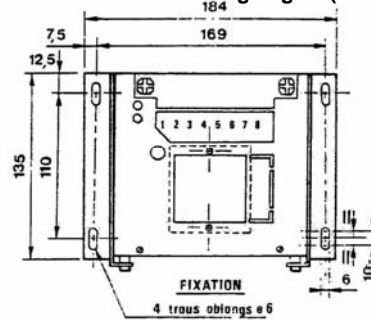
Assemblies with PL EURO (front view)



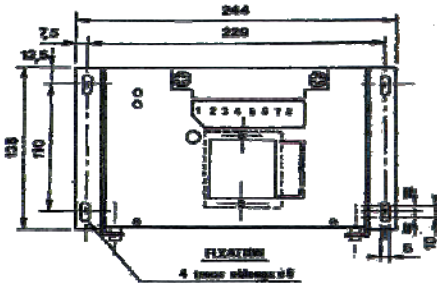
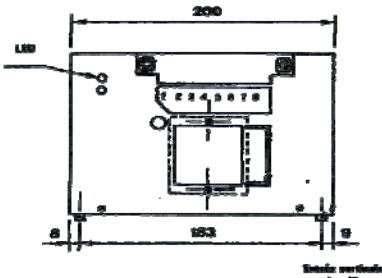
MODELS BG2G 2410- and 485-



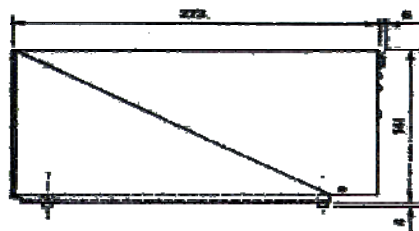
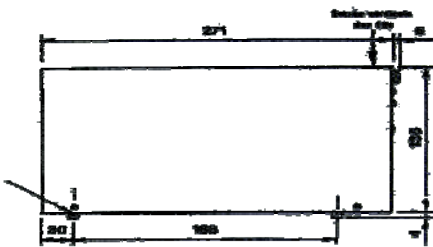
Assemblies with fixing angles (code EQ STD)



MODELS BG2G 2420- and 4810-



SIGHT OF DIMENSION OF MODELS BG2G 2410-, 2420-, 485- AND 4810-



Branchement

BG2G-1	BG2G-2	BG2G-3	Ecran-Masse
1	8	8	0 VAC
2	5	5	230 VAC (ou 115)
3	6	6	400 VAC (ou 230)
4	7	7	+Vs
5-6	3-4	3-4	-Vs
7-8	1-2	1-2	

- Fixing by 4 screws M4, max. length. intern: 6mm
- Obligatory assembly of the horizontal position supply for cooling by natural convection (see front view).
- Not block faces lower and higher of the power supply to allow the passage of the air.
- Possible assembly with squares in bottom of cupboard or on rails DIN (see diagrams)

In a constant preoccupation with an improvement. of its products, it transfers the right to modify without very characteristic notices quoted in present document

P R O N E R G Y

L'énergie à votre mesure

Tél. (+33).01.69.19.43.03- Fax. (+33).01.69.19.43.01
5 rue Ampère, 91380 CHILLY-MAZARIN, France

www.pronergy.com contact@pronergy.com